

## CONDENSATE REMOVAL PUMPS

**SUGGESTED A/C UNIT:** Up to 5.0 KW

NOW WITH V2 INTELLIGENCE

### MICROBLUE®

Sensing Option	Part No.		
CondenSense™ Reservoir (HLA)	X86-001	▶	No change
CondenSense™ Reservoir (FSA)	X86-002	▶	No change
Ducting Kit + CS™ Reservoir <small>IVORY IN COLOUR</small>	X86-007	▶	Ducting Kit + CS™ Reservoir <small>WHITE IN COLOUR</small> X86-008
Ducting Kit + CS™ Reservoir <small>WHITE IN COLOUR</small>	X86-008	▶	



**SUGGESTED A/C UNIT:** Up to 8.0 KW

LEGACY MODEL

NEW | V2 SERIES

### MINIBLUE®

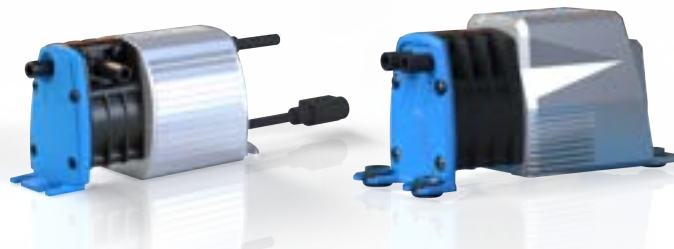
### MINIBLUE® V2

Sensing Option	Part No.		Sensing Option	Part No.
*Cooling Signal (CR Plug)	X87-500	▶	Legacy remains	
Temperature Sensor	X87-504	▶	Legacy remains	
(R) Reservoir	X87-509	▶	CondenSense™ Reservoir	X88-509
(R) + Ducting Kit & Reservoir	X87-507	▶	Ducting Kit + CS™ Reservoir <small>WHITE IN COLOUR</small>	X88-008

\*X87-500 > X88-509 - Will run continuously with no sensor connected as standard.

LEGACY MODEL

NEW | V2 SERIES



**SUGGESTED A/C UNIT:** Up to 14.0 KW

LEGACY MODEL

NEW | V2 SERIES

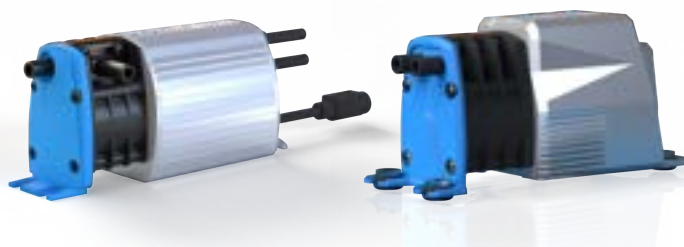
### MAXIBLUE®

### MAXIBLUE® V2

Sensing Option	Part No.		Sensing Option	Part No.
Thermistor Reservoir Sensor	X87-701	▶		
DrainStik™ Sensor	X87-702	▶	CondenSense™ Reservoir <small>*RESERVOIR UPGRADE</small>	X88-701
Temperature Sensor	X87-703	▶		
PRO Pack	X87-707	▶	PRO Pack	X88-707
<b>*NEW</b>		▶	Ducting Kit + CS™ Reservoir <small>WHITE IN COLOUR</small>	X88-009

LEGACY MODEL

NEW | V2 SERIES



**SUGGESTED A/C UNIT:** Up to 50.0 KW

LEGACY MODEL

NEW | V2 SERIES

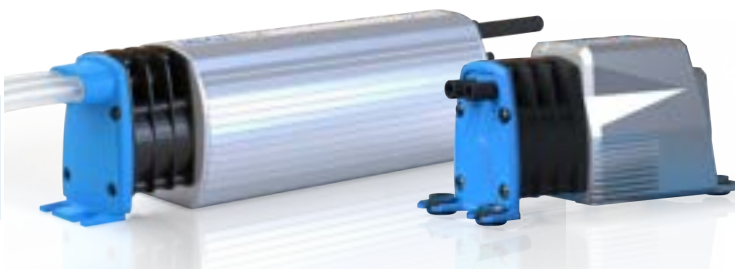
### MEGABLUE®

### MEGABLUE® V2

Sensing Option	Part No.		Sensing Option	Part No.
Thermistor Reservoir Sensor	X87-813	▶		
Temperature Sensor	X87-814	▶	CondenSense™ Reservoir <small>*RESERVOIR UPGRADE</small>	X88-813
DrainStik™ Sensor	X87-820	▶		
<b>*NEW</b>		▶	Ducting Kit + CS™ Reservoir <small>WHITE IN COLOUR</small>	X88-010

LEGACY MODEL

NEW | V2 SERIES



## REFRIGERATION DRAINAGE PUMPS

**SUGGESTED FRIDGE UNIT:** Up to 50.0 KW

LEGACY MODEL		NEW   V2 SERIES		LEGACY MODEL	NEW   V2 SERIES
<b>ARCTIKBLUE®</b>		<b>ARCTIKBLUE® V2</b>			
Sensing Option	Part No.	Sensing Option	Part No.		
Standard Model	X87-859	Standard Model <small>*SENSOR UPGRADED TO CONDENSENSE™*</small>	X88-859		
Swap-Out-Kit	X87-861	Swap-Out-Kit	X88-861		

## SENSOR & DETECTOR COMPATIBILITY

Model Compatibility	Part No.	Sensor Option	Part No.	COMPATIBLE WITH   V2 SERIES
MicroBlue® <b>V2</b>	X86-001	CondenseSense™ Reservoir	C21-001	
MicroBlue® <b>V2</b>	X86-002			
MicroBlue® <b>V2</b> + Ducting Kit	X86-007			
MicroBlue® <b>V2</b>	X86-008			
MiniBlue® <b>V2</b>	X88-509			
MaxiBlue® <b>V2</b>	X88-701			
MaxiBlue® <b>V2</b> PRO Pack	X88-707			
MegaBlue® <b>V2</b>	X88-813			
MiniBlue® <b>V2</b> + Ducting Kit	X88-009			
MaxiBlue® <b>V2</b> + Ducting Kit	X88-010			
MegaBlue® <b>V2</b> + Ducting Kit	X88-011			

Model Compatibility	Part No.	Sensor Option	Part No.	COMPATIBLE WITH   LEGACY MODELS ONLY
MicroBlue® <b>LEGACY</b>	X85-001	MaxiBlue® Reservoir <b>LEGACY</b>	C21-013	
MicroBlue® <b>LEGACY</b>	X85-002			
MicroBlue® + DK <b>LEGACY</b>	X85-007			
MicroBlue® <b>LEGACY</b>	X85-008			
MiniBlue® <b>R LEGACY</b>	X87-509			
MaxiBlue® <b>LEGACY</b>	X87-701			
MaxiBlue® PRO Pack <b>LEGACY</b>	X87-707			

Model Compatibility	Part No.	Sensor Option	Part No.	COMPATIBLE WITH   LEGACY MODEL ONLY
MegaBlue® <b>LEGACY</b>	X87-813	MegaBlue® Reservoir <b>LEGACY</b>	C21-008	


# V2 CROSS REFERENCE GUIDE

BUILT ON A LEGACY. POWERED BY INNOVATION.

**BLUEDIAMOND**  
INNOVATOR OF HVACR SOLUTIONS


Model Compatibility	Part No.	Sensor Option	Part No.
MiniBlue® <b>LEGACY</b>	X87-504	Temperature Sensor <b>LEGACY</b>	S12-002
MaxiBlue® <b>LEGACY</b>	X87-703		
MegaBlue® <b>LEGACY</b>	X87-814		

**COMPATIBLE WITH | LEGACY MODELS ONLY**



Model Compatibility	Part No.	Sensor Option	Part No.
MaxiBlue® <b>LEGACY</b>	X87-702	DrainStik™ <b>LEGACY</b>	S12-004
MegaBlue® <b>LEGACY</b>	X87-820		


**COMPATIBLE WITH | LEGACY MODELS ONLY**



## ACCESSORIES & MOUNTS



Model Compatibility	Part No.	Sensor Option	Part No.
MiniBlue® <b>LEGACY</b>	X87-500	Mounting Feet <b>LEGACY</b>	F10-011
MiniBlue® <b>LEGACY</b>	X87-504		
MiniBlue® R <b>LEGACY</b>	X87-509		
MaxiBlue® <b>LEGACY</b>	X87-701		
MaxiBlue® <b>LEGACY</b>	X87-702		
MaxiBlue® <b>LEGACY</b>	X87-703		
MaxiBlue® PRO Pack <b>LEGACY</b>	X87-707		
MegaBlue® <b>LEGACY</b>	X87-813		
MegaBlue® <b>LEGACY</b>	X87-820		
MegaBlue® <b>LEGACY</b>	X87-814		

**COMPATIBLE WITH | LEGACY MODELS ONLY**



Model Compatibility	Part No.	Sensor Option	Part No.
MaxiBlue® <b>LEGACY</b>	X87-701	MultiTank <b>LEGACY</b>	C21-014
MaxiBlue® <b>LEGACY</b>	X87-702		
MaxiBlue® <b>LEGACY</b>	X87-703		
MaxiBlue® PRO Pack <b>LEGACY</b>	X87-707		
MegaBlue® <b>LEGACY</b>	X87-813		
MegaBlue® <b>LEGACY</b>	X87-820		
MegaBlue® <b>LEGACY</b>	X87-814	MultiTank <b>V2</b>	C21-061
MaxiBlue® <b>V2</b>	X88-701		
MegaBlue® <b>V2</b>	X88-813		

**LEGACY MODEL**      **NEW | V2 SERIES**




# V2 CROSS REFERENCE GUIDE

BUILT ON A LEGACY. POWERED BY INNOVATION.

**BLUEDIAMOND**  
INNOVATOR OF HVACR SOLUTIONS

Model Compatibility	Part No.	Sensor Option	Part No.	COMPATIBLE WITH   LEGACY MODELS ONLY		
MicroBlue® LEGACY	X85-001					
MicroBlue® LEGACY	X85-002					
MicroBlue® LEGACY	X85-007					
MicroBlue® LEGACY	X85-008					
MiniBlue® LEGACY	X87-500					
MiniBlue® LEGACY	X87-504					
MaxiBlue® LEGACY	X87-701				Extension Cable LEGACY	C13-103
MaxiBlue® LEGACY	X87-702					
MaxiBlue® LEGACY	X87-703					
MaxiBlue® PRO Pack LEGACY	X87-707					
MegaBlue® LEGACY	X87-813					
MegaBlue® LEGACY	X87-814					
MegaBlue® LEGACY	X87-820					

Model Compatibility	Part No.	Sensor Option	Part No.	NEW   V2 SERIES		
MicroBlue®	X86-001					
MicroBlue®	X86-002					
MicroBlue® (Ducting Kit)	X86-008					
MiniBlue® V2	X88-509					
MiniBlue® V2 (Ducting Kit)	X88-008				CondenSense™ Extension Cable (2M)	C13-252
MaxiBlue® V2	X88-701					
MaxiBlue® PRO Pack V2	X88-707					
MaxiBlue® V2 (Ducting Kit)	X88-009					
MegaBlue® V2	X88-183					
MegaBlue® V2 (Ducting Kit)	X88-010					

Selected V2 pump models listed in the cross-reference guide are subject to availability. The suggested replacement products are provided for general guidance only specifications, performance, and installation requirements may differ from legacy models. Customers should review the full product documentation to confirm suitability for their application. All installation and operation must follow the manufacturer's instructions and comply with applicable regulations. Use outside the specified conditions may cause malfunction, damage, or void the warranty. For further guidance, contact your nearest wholesaler or visit [bluediamondpump.com](http://bluediamondpump.com).

## CROSS REFERENCE GUIDE V2

BLUEDIAMOND | [bluediamondpump.com](http://bluediamondpump.com)

**CHARLES AUSTEN PUMPS LTD** (Manufacturer)

Address: 100 Royston Road,  
Byfleet, Surrey,  
KT14 7NY, United Kingdom

Tel: +44 (0)1932 355277  
Email: [info@charlesausten.com](mailto:info@charlesausten.com)  
Web: [charlesausten.com](http://charlesausten.com)



## Global Offices

UK Office (HQ): Surrey, England  
EU Office: Rotterdam, Netherlands  
US Office: Buford, Georgia

