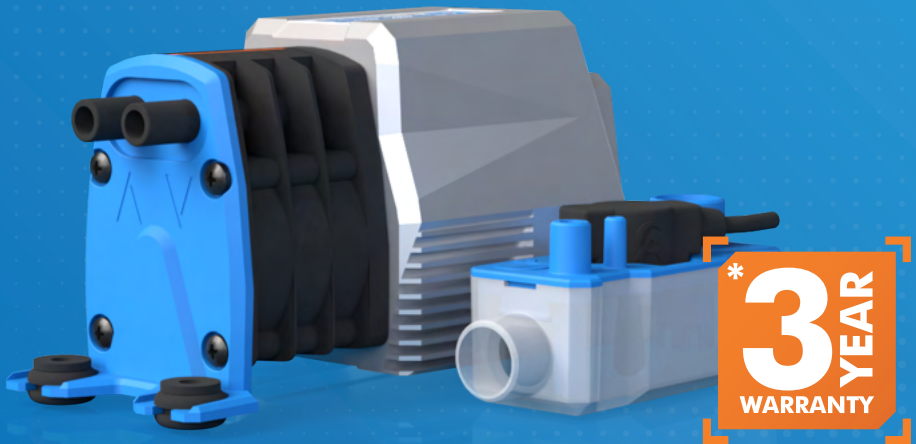


INSTRUCTION MANUAL

V2 SERIES

PERFORMANCE. INTELLIGENCE. RELIABILITY.



MINIBLUE® V2 | **MAXIBLUE® V2** | **MEGABLUE® V2**

Instruction manual applicable for RD01, OM01, TS01D and PRO Pack models .

VIDEO GUIDES  **ALSO AVAILABLE**

Manufactured by:

 **CHARLES AUSTEN**
PUMPS LTD



CONTENTS



V2 Series by BlueDiamond Pumps, represents the next generation in condensate management. Developed through years of research, the V2 Series combines intelligent control, superior efficiency and compact design to set a new benchmark in HVAC/R performance.

SAFETY INSTRUCTIONS & APPROVALS | PG. 04

IN THE BOX | PG. 05

PUMP INSTALLATION | PG. 06

RESERVOIR GUIDE | PG. 07

SCHEMATIC UK/EU | PG. 08

SCHEMATIC USA | PG. 09

SYSTEM TESTING | PG. 10

DISCHARGE PIPE CHART | PG. 11

NRV INSTALLATION | PG. 12

MOUNTING | PG. 13

WARRANTY REGISTRATION | PG. 11

SAFETY & APPROVALS



- **Alarm Lead:** Connect only to a Class 2 circuit. Do not exceed 5A, 240V AC/DC.
- **Water Use Only:** This pump is designed for liquid applications only.
- **Electric Shock Risk:** Not for use in aquamarine environments.
- **Power Safety:** Disconnect power before installation, servicing, or removal.
- **Wiring Earth:** The appliance incorporates an earth connection for functional purposes only. The appliance is double insulated and does not contain or require a safety earth.
- **Operating Temperature:** Pump is intended for continuous use at 35°C
- **Environment:** Do not store, install, or operate in damp areas.
- **Outdoor Use:** Do not place outdoors, submerge, or expose to frost.
- **Installation:** Clean all components before installation. Do not use damaged parts.
- **Indoor Use Only:** Suitable for indoor applications only.
- **Wiring Compliance:** Install per national and local wiring regulations.
- **Supply Cord:** Non-replaceable. Replace the unit if damaged.
- **Accessories:** Use only provided manufacturer accessories and sensors.
- **Reservoir Maintenance:** Clean regularly.
- **Child Safety:** Safe for children 8+ and those with reduced capabilities under supervision. Children must NOT play with the appliance.
- **CAUTION:** For plenum installations use only metallic tubing for the intake and discharge.

APPROVALS:

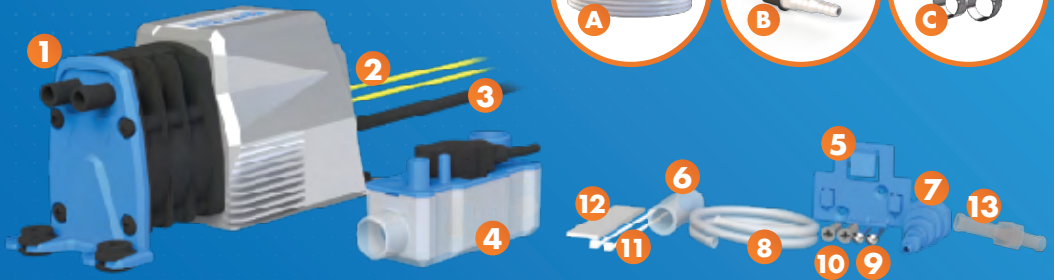
**PLENUM
RATED**



	PLENUM RATED	ETL Intertek	CE	UK CA
MINIBLUE® V2	✓	✓	✓	✓
MAXIBLUE® V2	✓	✓	✓	✓
MAXIBLUE® V2 PRO	✗	✗	✓	✓
MEGABLUE® V2	✓	✓	✓	✓
RD01	✓	✓	✓	✓
OM01	✓	✓	✓	✓

IN THE BOX

MaxiBlue® V2 PRO Pack



[CLICK TO WATCH VIDEO](#)



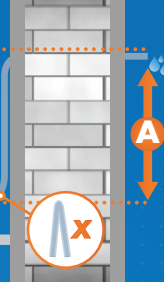
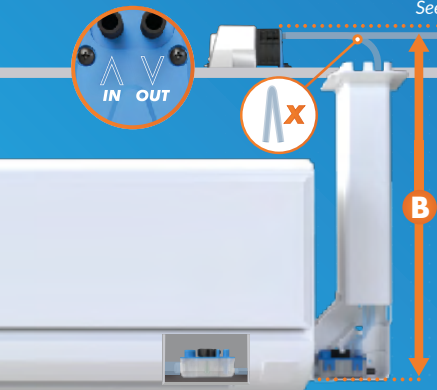
1. **V2 Pump** (MiniBlue®, MaxiBlue®, MegaBlue® OM01, RD01)
2. 2 Metre **alarm cable** - Pre-fixed to pump
3. 2 Metre **mains lead** - Pre-fixed to pump
4. Condensense™ **Reservoir** (Excluding OM01 & RD01)
5. Reservoir **mounting clip** (Excluding OM01 & RD01)
6. **Inlet tube** - A/C to Reservoir
7. Stepped **adapter**
8. **Vent tube**
9. **Screws** (x2) (Excluding OM01 & RD01)
10. **Wall plugs** (x2) (Excluding OM01 & RD01)
11. **Cable ties** (x2) (Excluding OM01 & RD01)
12. Adhesive **velcro strip** (x1) (Excluding OM01 & RD01)
13. **Non-Return Valve (NRV)** - USA Only

MaxiBlue® V2 PRO Pack also contains:

- A. Tubing (24m) 1m marking (6.3mm ID) Braided tubing
- B. Soil Pipe Adapter
- C. D14 Unex clip (x2)

INSTALLATION

See discharge pipechart for more details (pg.11)



Performance table:	FLOW	HEAD (A)	LIFT (B)	FUSE
MINIBLUE[®] V2	8 L/hour	8 Metres	5 Metres	0.5A
MAXIBLUE[®] V2	14 L/hour	8 Metres	8 Metres	0.5A
MEGABLUE[®] V2	50 L/hour	20 Metres	7 Metres	0.5A

*Note: Pumps are not supplied with fuse (0.5A is required)
Sensor not included for RD01 & OM01

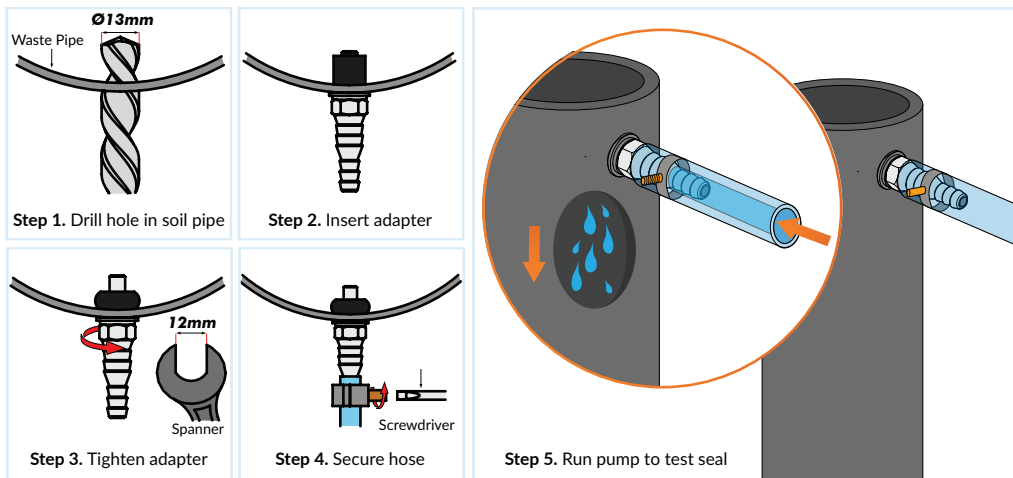
[CLICK TO WATCH VIDEO](#)



Leave sufficient space around the pump unit to allow for cooling. Ensure that the pump is not more than **B** above the condensate outlet, and not more than **A** below the desired drainage point for the pump outlet. The pump can be mounted in any orientation but must be kept DRY. (See table above for **A** & **B**).

Connect the discharge tube of the pump to a suitable drainage system. Secure with cable ties where necessary. A stepped adaptor is supplied to convert various tube diameters.

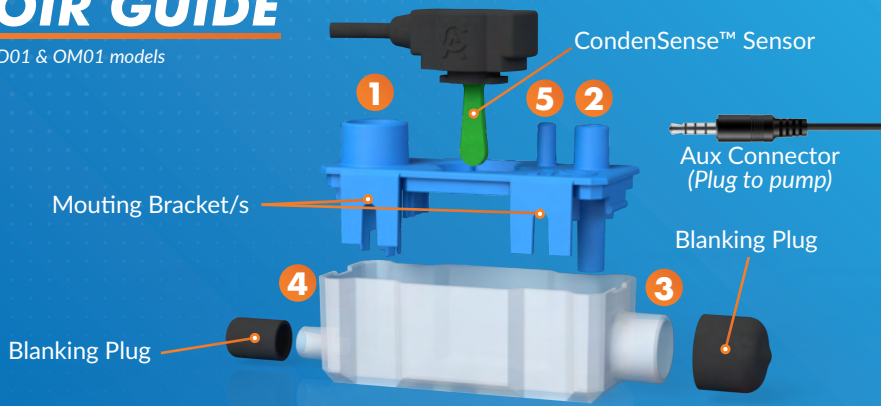
MaxiBlue V2 PRO Pack Drain Pipe Adapter Installation



RESERVOIR GUIDE

*Sensor not included for RD01 & OM01 models

1. Inlet
2. Outlet
3. Inlet
4. Outlet
5. Vent Outlet



Note: Ensure the reservoir assembly is secured in a **HORIZONTAL** position using the screws and/or mounting clip supplied.

[CLICK TO WATCH VIDEO](#) 



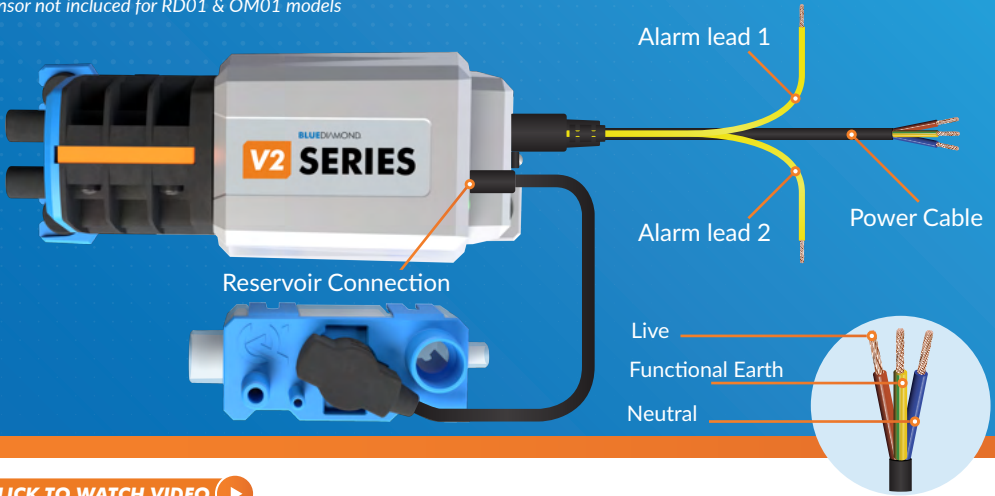
Choose to use either the top IN **1.** and OUT **2.** or side IN **3.** and **4.** OUT connections and fit blanking plugs to the unused ports. Connect the reservoir outlet (**2.** or **4.**) to the inlet of the pump & the flexible condensate inlet to the condensate tray hose. The reservoir is fitted with a vent tube **5.**, which must remain unblocked with the free end secured above the full level of the condensate drip tray.

The vent tube can be extended with flexible vent tubing included in the box. When the reservoir sensor is unplugged, there is a 10-second delay before the pump continuously operates at full speed.

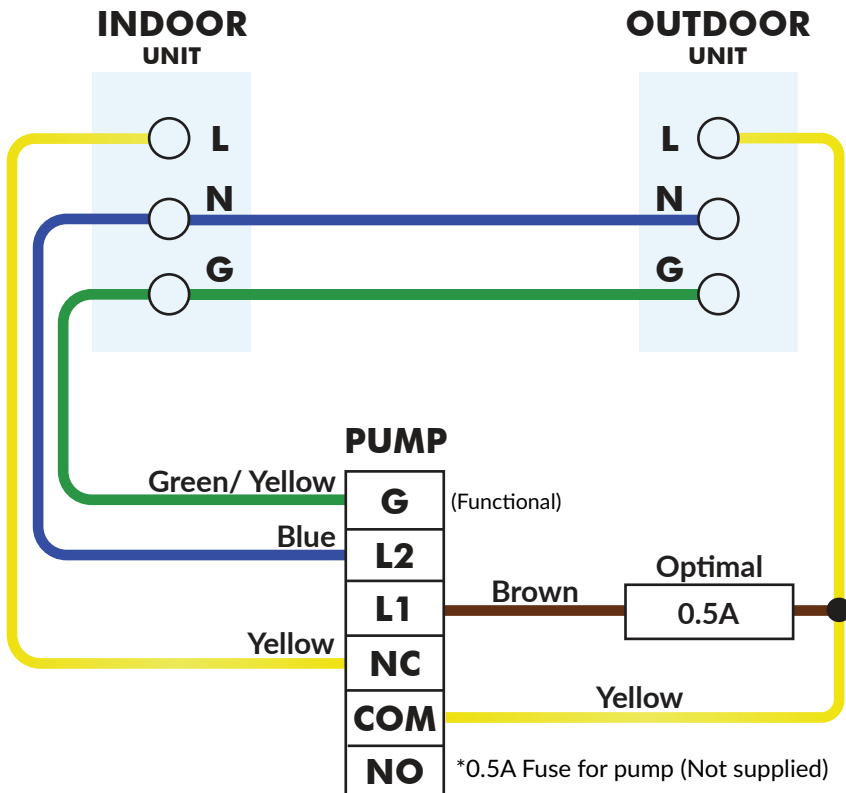


SCHEMATIC - UK & EU

*Sensor not included for RD01 & OM01 models



[CLICK TO WATCH VIDEO](#)

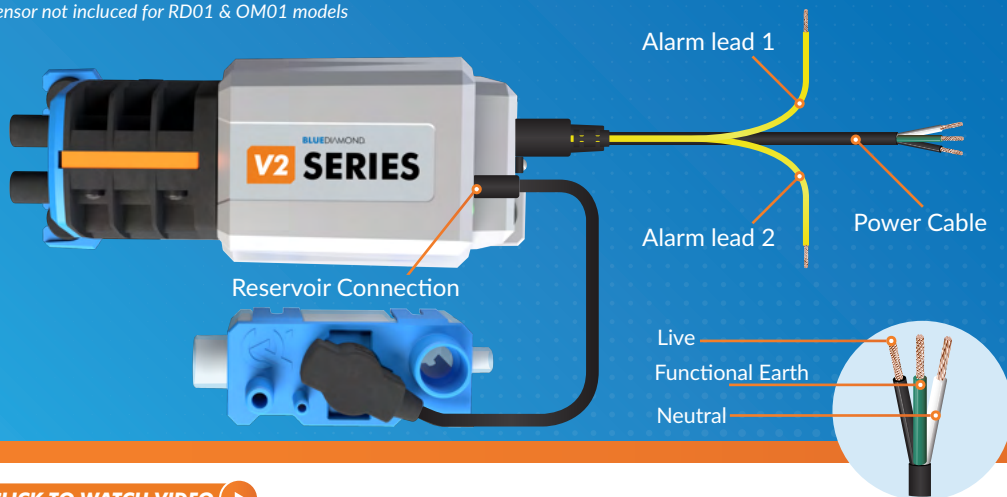


Note: For illustration purposes only. Compliance with local codes and electrical safety requirements is the sole responsibility of the installer.

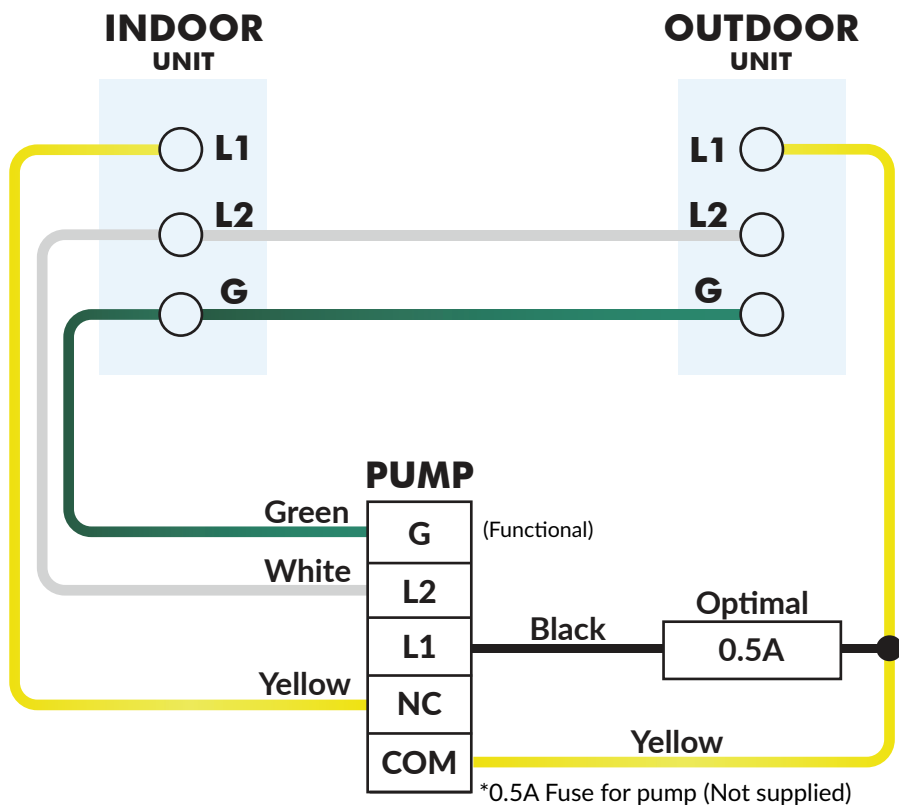


SCHEMATIC - USA

*Sensor not included for RD01 & OM01 models

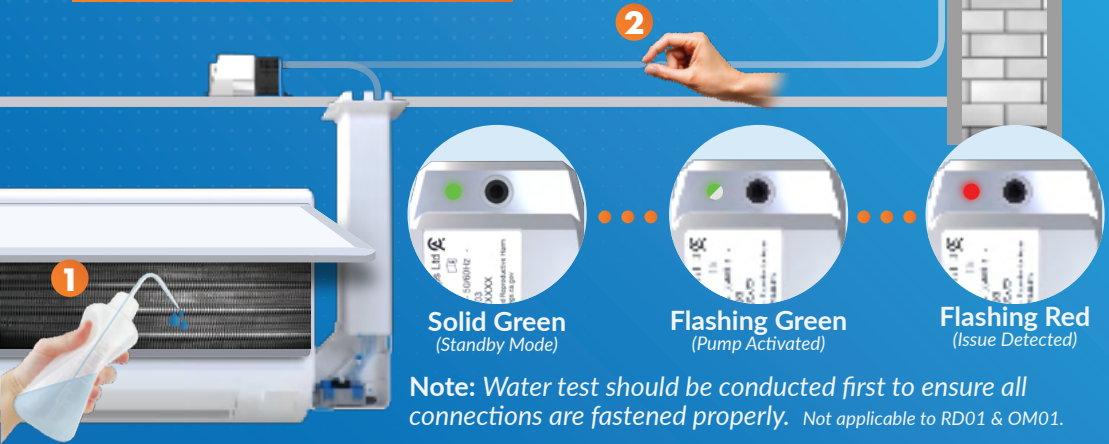


[CLICK TO WATCH VIDEO](#)



Note: For illustration purposes only. Compliance with local codes and electrical safety requirements is the sole responsibility of the installer.

SYSTEM TESTING



[CLICK TO WATCH VIDEO](#)



1. Water Test

To test, slowly pour cold water into the tray until the pump switches on. Allow the pump to run and switch off. The pump should run for approximately 7-10 seconds after emptying the reservoir/condensate tray pipe.

To ensure that the alarm connection is working, restrict the outlet of the reservoir hose and fill with water up to the high level sensor. The pump will turn on initially, then after a short delay the alarm relay will switch, detected using a multimeter or observing the shut down of the AC unit (Flashing Red LED + beep every minute). Allow the water to exit the reservoir; the water should then be pumped away, and AC operation will restart.

2. Alarm Test

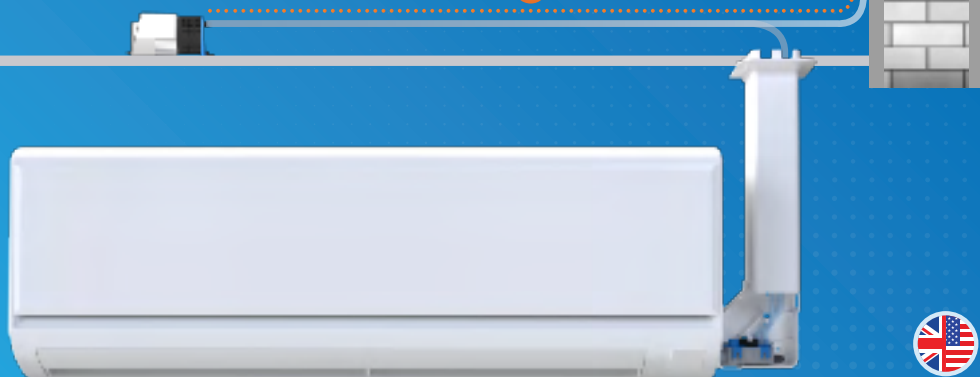
If the pump is installed remotely, occasionally water can become trapped in the u-bend at the lowest point of the system. Due to the pump's high flow rate, this can create a gurgling noise. It is recommended to fit the silencer. This must be fitted at the lowest point in the system, to reduce this noise.

LED Indicator Status

- **Solid Green:** Detecting condensate, system is in full working order.
- **Flashing Green:** Pumping mode activated.
- **Flashing Red + Alarm alert:** System alert, clean reservoir sensor (if continues contact support): Pump will run continuously at full speed as a precautionary measure.

Note: The pump is designed to run at 100% flow capacity when initially installed. The pump's intelligent control system records this initial environment for future reference. We recommend resetting the pump by turning it off at the mains power once the installation has been verified. Otherwise, it may take several flow cycles for the pump to fully adjust to the correct operating environment.

DISCHARGE PIPE RUN



MINIBLUE® V2

Can be mounted in any orientation up to 8m (26ft) away from the air conditioning unit.



V	8m	7m	6m	5m	4m	3m	2m	1m
	26ft	23ft	19ft	16ft	13ft	10ft	7ft	3ft
H	0m	3m	6m	9m	12m	15m	18m	21m
	0ft	10ft	20ft	30ft	40ft	50ft	60ft	69ft

(V) - Vertical Discharge Pipe (H) - Horizontal Discharge Pipe

MAXIBLUE® V2

Can be mounted in any orientation up to 8m (26ft) away from the air conditioning unit. Including MaxiBlue® V2 Pro Pack.



V	8m	7m	6m	5m	4m	3m	2m	1m
	26ft	23ft	19ft	16ft	13ft	10ft	7ft	3ft
H	0m	3m	6m	9m	12m	15m	18m	21m
	0ft	10ft	20ft	30ft	40ft	50ft	60ft	69ft

(V) - Vertical Discharge Pipe (H) - Horizontal Discharge Pipe

MEGABLUE® V2

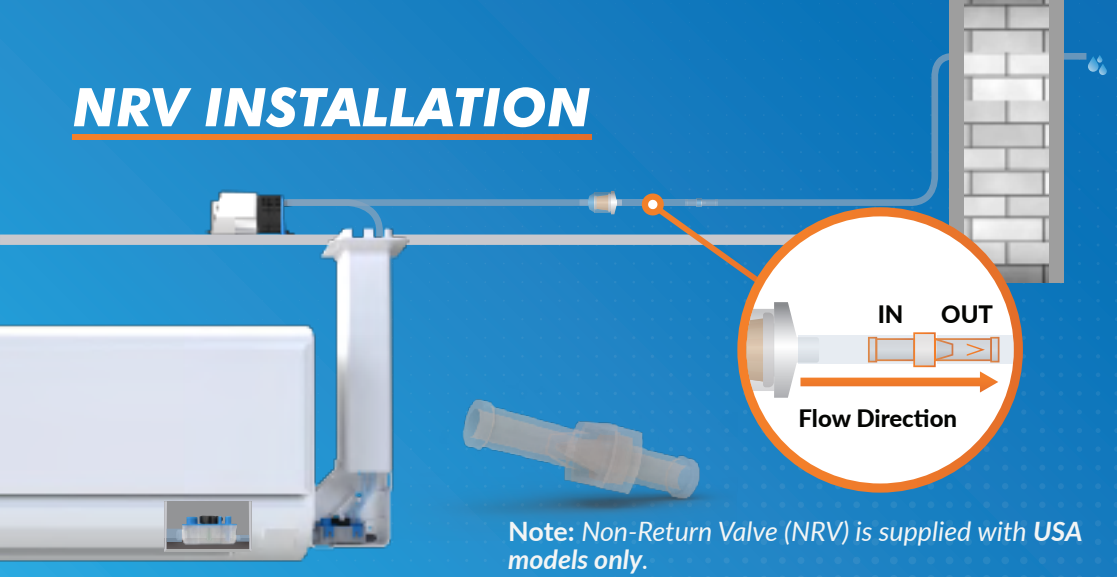
Can be mounted in any orientation up to 7m (26ft) away from the air conditioning unit.



V	20m	15m	10m	5m	1m
	65.5ft	50ft	32ft	16ft	3ft
H	0m	15m	30m	45m	60m
	0ft	50ft	100ft	150ft	200ft

(V) - Vertical Discharge Pipe (H) - Horizontal Discharge Pipe

NRV INSTALLATION



[CLICK TO WATCH VIDEO](#) 



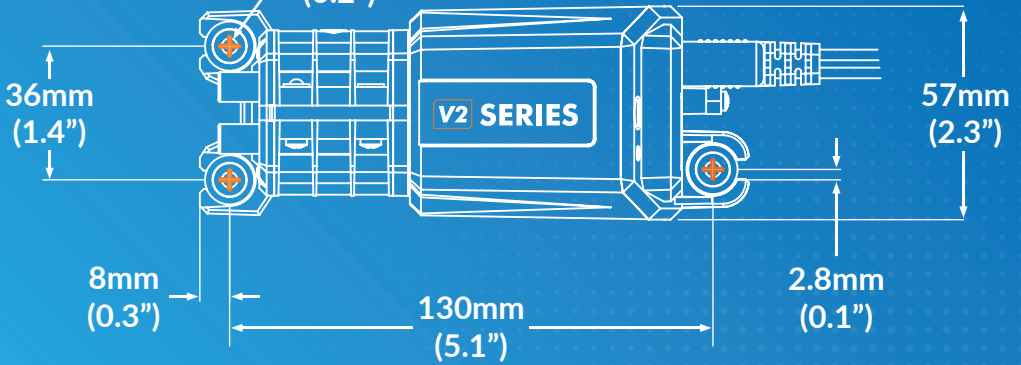
The NRV is supplied to meet code in select states, when not applicable for meeting the regional code requirement it should not be used. When necessary, place the NRV on the outlet side of the pump, leaving a minimum distance of 8" between pump outlet and the NRV.

When opting to use the NRV additional filtration to avoid debris and contamination entering the NRV should be considered, duty cycle, usage, and environmental conditions will determine the filtration required. Our guidance is to mount the filter in-line between pump outlet and inlet to the NRV. The ID of the filter should not be less than the NRV's.

*Filter not supplied

MOUNTING

*Applicable to all models $\varnothing 4.2\text{mm}$
(0.2")



[CLICK TO WATCH VIDEO](#) 




- The pump may be mounted in any orientation without affecting performance once installed.
- The pump must be installed in a dry, well-ventilated environment and protected from potential water ingress.
- Screws and wall plugs supplied with the unit are compatible with the mounting feet and intended for remote installation if required.
- It is strongly recommended that the pump be secured to a rigid, level base to minimise vibration, noise, and mechanical stress during operation.
- Maximum ambient air temperature of 35°C (95°F)
- Minimum ambient air temperature of 5°C (41°F)

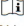
WARRANTY

To locate your pumps unique serial number, check these two areas.

*Not applicable to OM01 & RD01 models.





Charles Austen Pumps Ltd 

PC: X88-XXX 

Voltage: 110-240V - 50/60Hz -
Amps 0.03

S/N: XXXXXXXX XXXXX

 **WARNING:** Cancer and Reproductive Harm
www.P65Warnings.ca.gov



PC: X88-XXX S/N: XXXXXXXX XXXXX

Voltage: 110-240 50/60 Hz

 **WARNING:** Cancer and Reproductive Harm
www.P65Warnings.ca.gov

Charles Austen Pumps Ltd (www.bluediamondpump.com)

REGISTER WARRANTY HERE



- Registration makes it easy to view your pump's warranty history and keeps an accurate record of your pump's model, serial number, and installation date. This form applies to X88 pumps only (**MiniBlue V2, MaxiBlue V2, MegaBlue V2, and ArctikBlue V2** models).
- Look on the back of your pump to identify the rear plate label which contains both the part number and serial number as displayed above.
- Visit: bluediamondpump/warranty-registration to sign up



BLUEDIAMOND[®]

CONDENSATE REMOVAL PUMPS



INSTRUCTION MANUAL

 **CHARLES AUSTEN** PUMPS LTD (Manufacturer)

Address: 100 Royston Road,
Byfleet, Surrey,
KT14 7NY, United Kingdom

Tel: +44 (0)1932 355277

Email: info@charlesausten.com

Web: charlesausten.com



Global Offices

UK Office (HQ): Surrey, England

US Office: Buford, Georgia

EU Office: Rotterdam, Netherlands