

# EXPERT NANO 1LT

EXPERT NANO 1LT 01 | EXPERT NANO 1LT 02  
EXPERT NANO 1LT 11

The EXPERT NANO 1LT is a 1 relay electronic thermoregulator designed to control static refrigeration units operating at normal temperature with off-cycle defrosting (to stop compressor).

It is fitted with one analogic input for NTC/PTC temperature probes and one relay for the control of the compressor.

The regulator can be also configured for heat application.

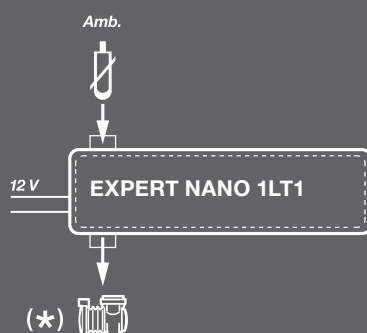
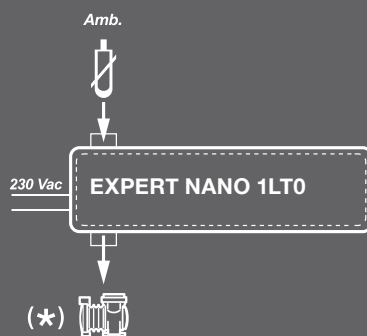


## APPLICATIONS

- Control of refrigerated counters, display windows and refrigeration units.

## CONNECTION DIAGRAMS

( \* ) = Configurable function



## MAIN CHARACTERISTICS

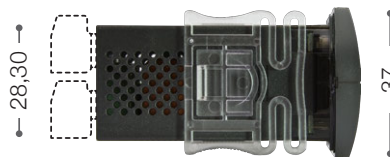
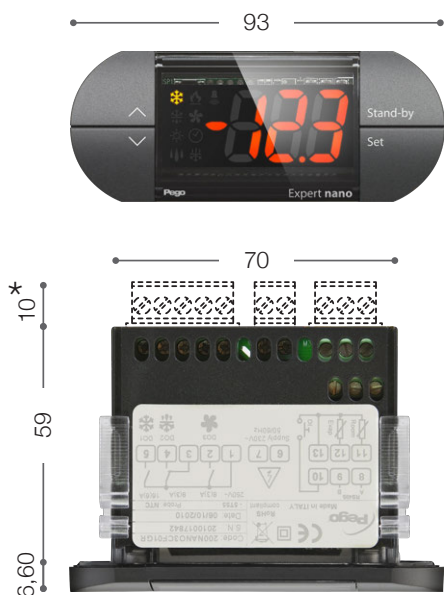
- Can be configured for hot or cold or alarm applications.
- Off-cycle defrosting can be set on the basis of frequency or duration.
- Key operated manual START/STOP defrosting.
- Key operated ON/OFF.
- Display/adjustment of temperature with decimal point.
- Flat front surface for easy cleaning and keys of ample dimension which can be customized with various colours (on request).
- High brightness display with increased icons and figures.
- PEGO programming philosophy guaranteeing immediate start-up.
- IP65 front protection. Two-fold fastening options: clips / screws.
- Relay capacity and power depending on model.



## ACCESSORIES AVAILABLE

## THERMOSTATS EXPERT NANO SERIES

86 | 87



(\*) Only for EXPERT NANO 1LT 02

TECHNICAL CHARACTERISTICS	EXPERT NANO 1LT 01	EXPERT NANO 1LT 02	EXPERT NANO 1LT 11
<b>DIMENSIONS</b>	93 x 37 mm depth 59 mm		
<b>DRILL HOLE TEMPLATE</b>	71 x 29 mm (+0,2/-0,1 mm)		
<b>INSTALLATION</b>	In front of board by means of rear fastening clips or two front screws		
<b>CASING</b>	Plastic PC+ABS UL94 V-0 body, PC transparent front, Key panel PC or PC+ABS		
<b>INSULATION TYPE</b>	Class II		
<b>FRONT PROTECTION RATING</b>	IP65 with front board installation		
<b>POWER SUPPLY</b>	230 V AC ~ +10/-15% 50/60 Hz		12 V AC ~ +10/-15% 50/60 Hz 12 V DC +10/-15% class 2
<b>ABSORBED POWER</b>	3 VA max		
<b>OPERATING TEMPERATURE</b>	-5 ÷ 55 °C - humidity < 90% Rel. Hum. Not condensing		
<b>STORAGE TEMPERATURE</b>	-20 ÷ 70 °C - humidity < 90% Rel. Hum. Not condensing		
<b>UNSUITABLE OPERATING ENVIRONMENTS</b>	Environments with strong vibrations or impacts; aggressive, polluted or corrosive atmospheres, exposure to direct solar radiation, explosive atmospheres or flammable gas.		
<b>DISPLAY</b>	3-Digit with sign, decimal point and LED status indicators		
<b>RESOLUTION</b>	0,1 °C		
<b>PROBE PRECISION (electronic)</b>	±0,5 °C		
<b>READING RANGE</b>	-45 ÷ 99 °C		
<b>CONNECTIONS</b>	Screw fixed clamps	Screw removable clamps	Screw fixed clamps
<b>SOFTWARE CLASS</b>	A / Parameters saved on non-volatile memory (EEPROM)		
<b>INPUTS</b>			
<b>ANALOGUE INPUTS</b>	1 Inputs for NTC probes NTC (10 kΩ 1% at 25 °C) / PTC		
<b>OUTPUTS</b>			
<b>COMPRESSOR RELAY (DO1)</b>	N.O. 16(6)A / 250 V AC	N.O. 16(6)A / 250 V AC	N.O. 16(6)A / 250 V AC
<b>ACCESSORIES</b>			
<b>ACCESSORIES AVAILABLE</b>	NANO BOX - NANO ADAPTER	NANO ADAPTER	NANO BOX - NANO ADAPTER